



# PPG CANADA INC. DURACRON® COATINGS



## DURACRON Thermosetting Acrylic Enamels

For more than 40 years, Duracron finishes have performed at or above stringent specifications set by the marketplace. A one-coat thermosetting acrylic baking enamel, Duracron coatings from PPG add beauty and performance to a wide variety of uses. Duracron coatings are available in a wide range of standard colours or can be custom colour matched to suit your specific demands. They provide low maintenance and economy. When applied over properly treated metal, Duracron coatings give excellent corrosion resistance, film integrity, colour control, impact and mar resistance. Duracron coatings should be applied over a primer for exposure to more corrosive atmospheres.

When applied over properly pretreated aluminum, Duracron coatings meet or exceed the AAMA 2603 specifications.

Duracron coatings are recommended for use on residential windows, storm and patio sliding doors, railing, trim, various other building components and interior commercial applications. Duracron coatings are not recommended for exterior monumental buildings or high rise curtain wall; Duranar® and Duranar XL fluoropolymer coatings will give far superior results for applications of that type.



## Film Characteristics and Properties of Polycron® and Duracron Coatings\*

Film Characteristics	AAMA 2603 <sup>1</sup> Paragraph Number and Performance Requirements	Polycron and Duracron coatings Performance <sup>1</sup>
Colours available <sup>2</sup>		White, Black and a full range of colours and polychromatics
Dry Film Thickness	4.3 0.8 mil minimum	1.0" 0.2 mils <sup>1</sup>
Color Uniformity	6.1 visually controlled	Colour instrumentally and/or visually controlled
60° Gloss, ASTM 0-523 <sup>3</sup>	6.2 high, medium and low	High, medium, low gloss-colours. Medium and low gloss-polychromatics
Hardness-Berni Eagle Turquoise Pencil	6.3 H minimum	Meets or exceeds spec.
Adhesion-Crosshatch 1/1, Wet and Dry	6.4 no removal	Excellent-no removal
Direct Impact '10" Distortion Fabrication	6.5 no removal	Excellent-no removal
Acid Resistance 10% Muriatic Acid Spot Test	6.6.1 15 minutes-no attack	Excellent-withstands punching, cutting, drilling
Alkali Resistance - Mortar Pat Test 100% R.H. @ 100°F	6.6.2 24 hours-no attack	Meets or exceeds spec.
Detergent Resistance (3% Immersion @ 100°F)	6.6.3 72 hours-no attack	Meets or exceeds spec.
Humidity Resistance 100% R.H. @ 100°F	6.7.1 few #8 blisters max. 1500 hours exposure	Meets or exceeds spec.
Salt Spray Resistance 5% Salt @ 100-F	6.7.2 1/8" max. undercutting 1500 hours exposure	Meets or exceeds spec.
Weather Exposure	6.8 1000 hours Weather-0-Meter or 1 year South Florida exposure; no loss of adhesion, minimal colour change	Meets or exceeds spec.
Compatibility with Commercial Sealants and Glazing Putties		Consult sealant manufacturer for recommendations

- 1 AAMA "Voluntary Specification, Performance Requirements and Test Procedures for Pigmented Organic Coatings on Aluminum Extrusions and Panels." Publication No AAMA 2603-02.
  - 2 The range of colour availability will vary depending on exposure requirements and architects' specifications.
  - 3 American Society for Testing and Materials.
  - 4 For more critical applications, a primer/topcoat system and greater film thickness may be recommended. Consult PPG coating specialists for recommendations when developing specifications.
- Performance characteristics shown here should not be considered expressed or implied warranties made by PPG because compliance with PPG's recommendations for application, end use environments and other factors beyond PPG's control can effect the performance characteristics of PPG's products. Express or implied warranties regarding particular performance characteristics for specific applications are the responsibility of the applicator.

©Registered Trademark of PPG Canada Inc.



PROGRESS DOORS



# Quality Colour for Quality Projects



K1285  
Gloss White



K11625  
White



K30930  
Norco Beige



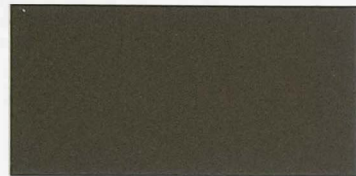
K31029  
Gloss Cream



K31040  
Ivory



K30289  
SG Ivory



K7390  
LG Charcoal



K70632  
Light Bronze Metallic



K30618  
Beige



K70634  
LG Bronze #42



K71232  
Metallic Brown



K72088  
LG Brown



K72164  
Hurd Bronze



K72204  
Oak Brown



K90212  
LG Black



K90342  
LG Black Metallic



K90421  
SG Black



K20794  
Gray Metallic



## PPG Industrial Coatings

[www.ppgideascape.com](http://www.ppgideascape.com)

All colours are available  
in PPG Polycron® Quality.

This is a display colour chart. A reasonable  
degree of colour variation can be expected on  
production line spraying.

Actual coated panels should be requested for  
more precise colour and gloss representation.



PROGRESS DOORS