

Monumental color and protection



Architectural Powder Coatings Color Guide



We protect and beautify the world™



PROGRESS DOORS

Architectural Powder Coatings Color Guide



A full line of tough, durable and colorful architectural extrusion and panel coatings

PPG's full line of advanced powder coatings offer a combination of performance and value for virtually any architectural application. PPG makes four brands of architectural powder coatings that, together, cover all three major AAMA performance specifications for architectural coatings.

	ENVIROCRON® 03	Envirocron 04	CORAFロン® Powder	DURANAR® Powder
AAMA Specification	AAMA 2603	AAMA 2604	AAMA 2605	AAMA 2605
Resin Quality	Standard Polyester	Ultra-Durable Polyester	FEVE Fluoropolymer	PVDF Fluoropolymer
Coating Layers*	One coat	One or two coats	One or two coats	Two coats
Seacoast Coverage	No	Yes, with primer	Yes, with primer	Yes
	Low, Medium, High	Low, Medium, High	20-70	20-30
Appearance	Solids, Mica, Metallic	Solids, Mica, Metallic	Solids, Mica	Solids

* Coraflon and Envirocron coatings are available with liquid and powder primers for severe environments.

Envirocron 03 Durable Polyester Powder

With a durable polyester formulation that meets AAMA 2603 specifications, *Envirocron 03* powder coatings are available in a broad range of solid colors, mica and metallic pigments, and textured finishes, making them ideal for aluminum residential window and door frames, railings, trim, and interior applications. The coatings provide good film integrity, impact and mar resistance, and color control.

Envirocron 04 Ultra-Durable Polyester Powder

Envirocron 04 ultra-durable powder coatings use a more robust resin and pigment system than *Envirocron 03* coatings, meeting AAMA 2604 specifications in a wide range of colors, glosses, and mica and metallic effects. The added durability makes them an excellent choice for high-end residential and light commercial buildings with high-traffic environments.

Coraflon FEVE Fluoropolymer Powder

Coraflon powder coatings are formulated to provide exceptional UV durability, colorfastness, and gloss retention. Available in satin and high-luster glosses, including solids and micas, *Coraflon* powder coatings have the unique ability to adhere directly to metal as a one-coat paint system or as a two-coat system with a primer for harsh environments. *Coraflon* coatings make an excellent choice for curtain walls, storefronts, and other highly visible, high-end monumental applications.

Duranar 70% PVDF Fluoropolymer Powder

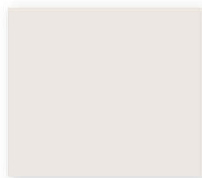
The renowned *Duranar* line of coatings are now available in a powder formulation, offering unparalleled resilience on storefronts, curtain walls, windows and louvers in a wide range of earth-tone solid colors. Our highest performing product always utilizes a liquid or powder primer, making it the best choice for severe seacoast environments. The coating is chemically inert, offering exceptional resistance to chemical attack and surface damage caused by acid rain, salt, mortar deposits, humidity, and graffiti – all while retaining color and gloss over decades of weather exposure.



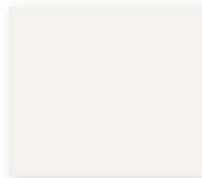
PROGRESS DOORS

CORAFLO SOLID COLORS

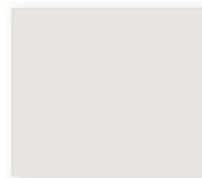
Also available for *Duranar* and *Envirocron* powder coatings.*



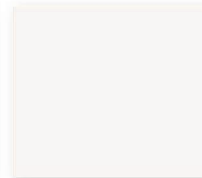
Bone White
PCNT88101



Graham White
PCNT88104



Bone White
PCNT88147



Bright White
PCNT88148



Colonial White
PCNT88149



Ivory
PCNT88150



Malt
PCNT28207



Natural Wicker
PCNT28208



Caramel Latte
PCNT28174



Sahara Sand
PCNT28209



Sandstone
PCNT28210



Beige
PCNT28102



Seawolf
PCNT28211



Antique Bronze
PCNT28212



Fairview Taupe
PCNT28128



Cocoa Bean
PCNT28213



Medium Bronze
PCNT28214



Bronze
PCNT28215



Statuary Bronze
PCNT28216



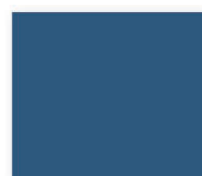
Bronze
PCNT28217



Brick Red
PCNT68116



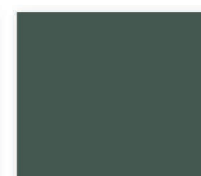
River Rouge Red
PCNT68117



Bermuda Blue
PCNT58113



Interstate Blue
PCNT59129



Interstate Green
PCNT49143



Fashion Gray
PCNT78166



Eclipse Gray
PCNT78163



Charcoal
PCNT79121



Charcoal Gray
PCNT78133



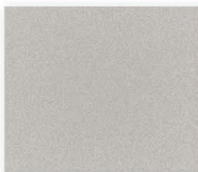
Black
PCNT98111



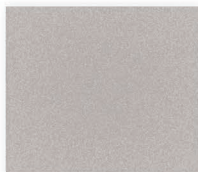
PROGRESS DOORS

CORAFLOX SUNSTORM® MICA COLORS

Also available for *Envirocron* powder coatings.*



Platinum
PCNT75153



White Ice Metallic
PCNT75151



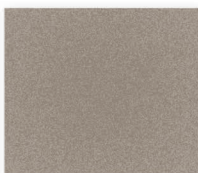
Anodic Clear
PCNT75155



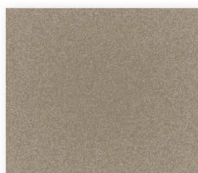
Champagne Metallic
PCNT75139



Gray Aluminum
PCNT75138



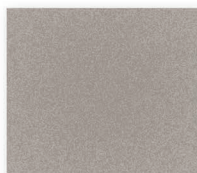
Bronze
PCNT75137



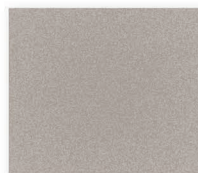
Light Bronze
PCNT25129



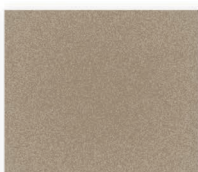
Champagne
PCNT75159



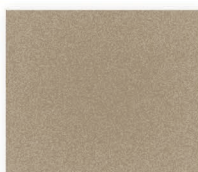
Champagne Gold
PCNT75140



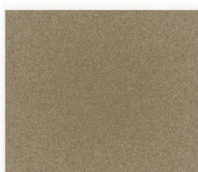
Arcadia Silver
PCNT75154



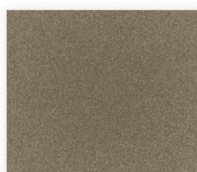
Bronze
PCNT25130



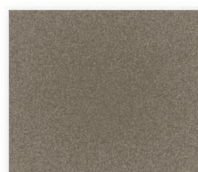
Champagne Bronze
PCNT25122



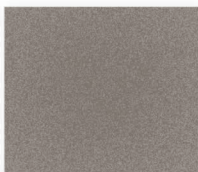
Harvest Gold Pearl
PCNT25116



Medium Bronze
PCNT25118



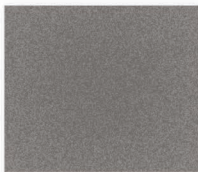
Driftwood Mica
PCNT25120



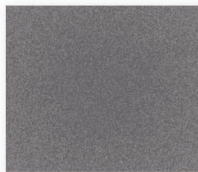
Pewter
PCNT75163



Medium Bronze
PCNT25101



Silverstorm
PCNT75164



Gray Velvet
PCNT75130



Cosmic Gray Mica
PCNT75132



Graphite Gray
PCNT75156

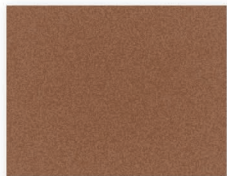


PROGRESS DOORS

CORAFLOK SPECIALTY COLORS

Textured and multi-color chips also available for *Duranar* and *Envirocron* powder coatings.*

TEXTURED

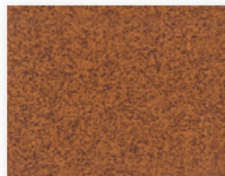


Terra Cotta Dark
PCNT39105

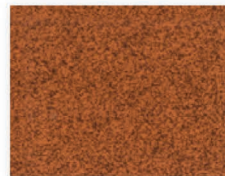


Black Flower Tex #5
PCNT99112

MULTI-COLOR



Orange Speckle
PCNT34100

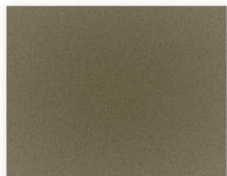


Deep Orange Speckle
PCNT64104

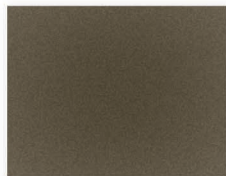


Black Rust
PCNT94100

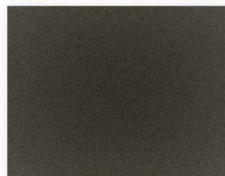
ANODIC LOOK



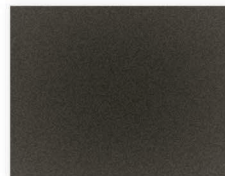
Champagne
PCNT25134



Light Bronze
PCNT25133



Medium Bronze
PCNT25131



Bronze
PCNT25132



GLOSS LEVEL EXAMPLES



HIGH GLOSS



MEDIUM GLOSS



LOW GLOSS

TO ORDER SAMPLES

visit requestppg.com
or call 800-258-6398.

* The color codes for *Duranar* or *Envirocron* powder coatings will differ from what is shown. Ask your PPG representative for more information.



PROGRESS DOORS

Color and styling services

PPG has a growing inventory of over 300,000 color formulations and a global staff of color and design experts. All 60 colors on this color card are stocked and available on request.

To learn more about how to make PPG your single-source supplier of architectural powder coatings or to order color cards, literature or sample panels, please visit requestppg.com or call **800-258-6398**.

A global partner

PPG is a preeminent supplier of coatings solutions. Through global leadership in innovation, sustainability and color, we help customers in the automotive, aerospace, industrial and construction segments to enhance more surfaces in more ways than any other company. Founded in 1883, PPG has its global headquarters in Pittsburgh, Pennsylvania and operates in more than 70 countries around the world.

Our global manufacturing and product development capabilities ensure that coatings can be manufactured cost-effectively and consistently almost anywhere in the world. We have strategic locations throughout North America, South America, Europe and the Asia/Pacific region, each staffed with knowledgeable sales, technical and manufacturing personnel trained in multiple coating technologies.



PPG Regional Headquarters

PPG Global Headquarters/
PPG North America
Pittsburgh, PA USA
1.888.774.2001

PPG South America
Sumare, Sao Paolo, Brazil
+ 55.19.3864.6000

PPG Europe
Rolle, Switzerland
+ 41.21.822.3000

PPG Asia Pacific
Hong Kong, China
+ 852.2860.4500

TO ORDER SAMPLES visit requestppg.com or call **1-800-258-6398**.

Custom colors may be ordered on request.

ABOUT THE PHOTOS

Norman Y. Mineta San Jose International Airport
San Jose, CA
Duramar Regal White Powder Coatings

The Tower at PNC Plaza
Pittsburgh, PA
Coraflon Sunstorm Powder Coating

Photos of The Tower at PNC Plaza courtesy of Tom Cwenar.

The color chips in this brochure cannot be considered totally accurate color matches, and are not to be used as approved standards. This document contains general information only and should not be construed as creating any warranties, express or implied. Please contact a PPG representative for additional information. *Coraflon*, *Duramar*, *Envirocron*, *Sunstorm* and the *PPG logo* are registered trademarks. *We protect and beautify the world* is a trademark of PPG Industries Ohio, Inc.

©2017 PPG Industries, Inc. All rights reserved. 04/17 PPG-17

PPG Industrial Coatings • 151 Colfax St. Springdale, PA 15144 • 1.800.258.6398 • ppgmetalcoatings.com



We protect and beautify the world™



PROGRESS DOORS